



H2O
POWER EQUIPMENT

UNDER
PRESSURE



**WELCOME TO H2O POWER EQUIPMENT'S
MONTHLY NEWSLETTER!**

Fall Floor Care: Keep Your Facility Spotless

As the leaves start to fall and the weather changes, so do the demands on your facility's flooring. Autumn brings its own set of challenges, from wet leaves and mud being tracked inside to the increased foot traffic that comes with the busy season. This makes fall the perfect time to focus on your floor care routine and ensure your business is prepared to handle whatever the season throws your way.

Investing in quality floor care equipment is essential to maintaining a clean and safe environment for both employees and customers. Whether you're dealing with stubborn stains or looking to maintain a polished finish, the right tools can make all the difference.

**Newsletter
Highlights**

Sales

Product Highlights

Blog

Video

Follow Us!

Colorado's LARGEST Pressure Washer Superstore!

Serving Denver, Grand Junction/Western Slope,
and Colorado Springs/Pueblo

TRADE-IN, TRADE UP ENDS THIS MONTH!

15% OFF*
WITH ANY BRAND **HOT WATER**
TRADE-IN

based on new equipment.



LANDA®

Don't miss this exclusive opportunity to boost your cleaning operations with Landa's limited-time Trade-In, Trade-Up promotion! Exchange your old pressure washer and receive up to 15% off on the purchase of a brand new Landa pressure washer from H2O Power Equipment. This is the perfect moment to invest in cutting-edge cleaning technology that will significantly improve your efficiency and performance.

Bring your outdated equipment to us, and let's take your business to the next level! Act fast—this amazing offer expires on October 31!

[LEARN MORE](#)

FLOOR CLEANERS

For all your fall floor care challenges, we've curated a selection of top-notch equipment designed to deliver exceptional results. These high-quality tools are crafted to make floor maintenance efficient and effective, ensuring your business stays clean and inviting all season long.



FACTORY CAT MINIHD

This floor scrubber stands out for its exceptional maneuverability and versatility, making it an ideal choice for a variety of settings including showrooms, concrete floors, service centers, and even metal floor grates. Designed to offer superior productivity, this robust machine ensures thorough and efficient cleaning regardless of the environment.



BD 50/50 C CLASSIC BP

This battery-powered walk-behind scrubber is perfect for contract cleaners, retail spaces, schools, and healthcare facilities. It delivers efficient, powerful cleaning with three versatile cleaning modes—Normal, Intense, and Vacuum. Its user-friendly design and robust performance make it an excellent choice for tackling large-scale cleaning tasks effectively, ensuring your spaces remain spotless and well-maintained.



KM 70/20 C

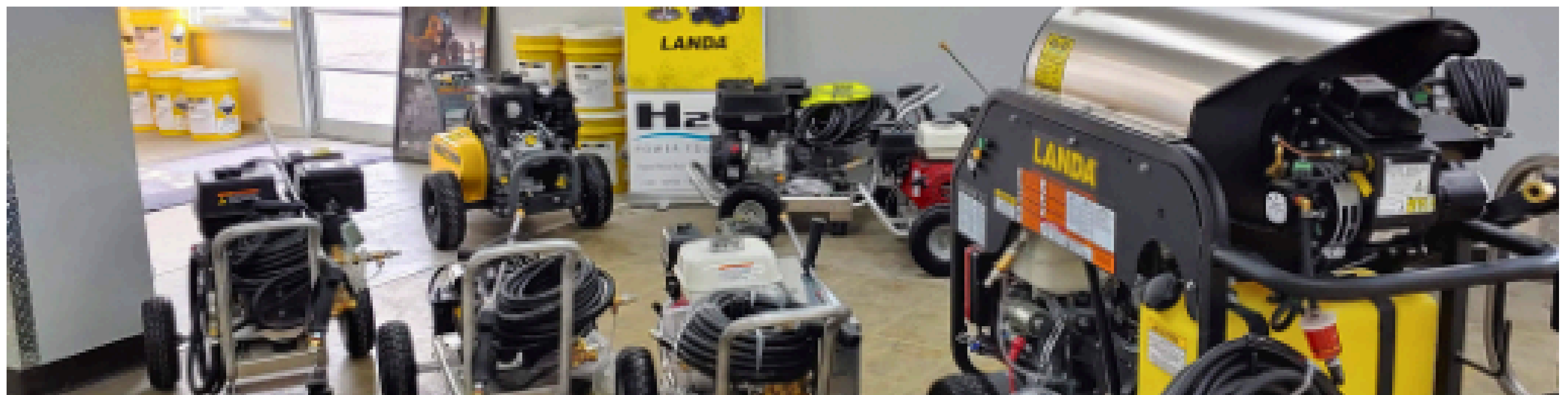
Ideal for spot cleaning and small to mid-sized areas. Its filter, sweeping roller, and side brush offers effortless, dust-free cleaning. It is suitable for both indoor and outdoor use. With a performance rate seven times higher than a broom, adjustable sweeping roller, and variable side brushes, it ensures optimal results on various surfaces. It is compact and easy to store when not in use.



KARCHER BD 35/15 C BP CLASSIC SCRUBBER

This compact and flexible machine is specifically designed for efficiency in crowded environments or areas filled with tables and chairs. It combines the proven features of our existing Classic scrubbers with a slimmer footprint that enhances maneuverability and accessibility. Its quick-drying capability ensures no residue is left behind, providing a superior clean every time.

READ OUR NEWEST BLOG



Why Trust Landa: Your Go-To Solution for Industrial Cleaning

Known for their unmatched durability and superior cleaning performance, Landa has been a reliable name in industrial cleaning for over 50 years. As the leading provider of industrial cleaning equipment in Colorado and Wyoming, we've seen firsthand how Landa's robust machines help businesses stay on top of their cleaning needs, whether it's removing tough grease and oil stains or tackling general maintenance tasks.

Choosing Landa means choosing quality you can trust. Landa pressure washers are engineered to withstand the toughest conditions, ensuring your investment lasts for years. With advanced technology that delivers powerful cleaning results, Landa units are designed to meet the rigorous demands of industries ranging from automotive to manufacturing. As you plan for the busy months ahead, remember that Landa's proven performance and reliability make it a smart choice for businesses looking to maintain high cleanliness and efficiency standards.

[READ MORE](#)



NEED EQUIPMENT? WE CAN HELP!

No matter the size of your project, our rental program has you covered.



From high-pressure washers that blast away stubborn grime to versatile trailers for easy transportation and efficient surface cleaners for a spotless finish, we've got an extensive range of top-notch equipment ready for you to rent as you need it!

Choose from a wide range of top-quality cleaning equipment:

- Hot water trailer package
(5 GPM @ 3500 PSI w/ 210-gal tank)
- Portable hot water pressure washers
(4 GPM @ 3500 PSI)
- Portable cold water pressure washers
(5 GPM @ 3500 PSI)
- Walk-behind and Ride-on Floor Scrubbers
(20" - 32" wide)
- Surface Cleaners



We ensure that all our rental equipment is maintained to the highest standards, so you can trust that they'll perform when it matters most.

But it's not just about the equipment. We're committed to delivering exceptional customer service, too. Our knowledgeable team is always on hand to help you choose the right tools for your job and offer expert advice to ensure you get the most out of your rental. So why wait? Rent with us today and turn your to-do list into a done list!

[LEARN MORE](#)

TEAM H2O

EMPLOYEE APPRECIATION CORNER

At H2O Power Equipment, our team members truly represent the foundation of our achievements. We take great pride in acknowledging the diligence, commitment, and outstanding service they provide. Our Employee Appreciation Corner is meant to shine a light on their invaluable contributions and to honor the individuals who have helped propel us to be the premier industrial cleaning equipment service provider in Colorado and Wyoming.



Join us in congratulating James on his 1-year journey with H2O Power Equipment! Over the past year, James has demonstrated exceptional dedication and a commitment to excellence, making a significant impact on our team and the services we deliver. We are grateful to have such a talented individual among us. Thank you, James, for your hard work and contributions. Here's to many more successful years ahead!

Looking to join #TeamH2O in Colorado Springs or Denver? Contact us to learn more!

[LEARN MORE](#)

NEED SERVICE?



Our techs are trained and have experience working on all the many different pressure washer and parts washer brands.

Our service professionals are considered industry leaders with the expertise to handle the most difficult repairs and unique situations that come up with your equipment. We work with you in the shop or on location, to get your equipment up and running as quickly as possible.



[SCHEDULE SERVICE NOW](#)

A PRESSURE WASHER SUPERSTORE THAT'S SOCIAL?

You bet.

Follow us on your favorite social media platform for specials, flash sales, partner shout outs, videos, and more!

Drop us a line or leave us a review, we'd love to hear from you!



[LEAVE US A REVIEW](#)

[New to this email? Subscribe today!](#)